

Welcome

Here is a partial listing of our Eyelet inventory. The items highlighted in yellow are normally in stock but we can get the eyelets you need. Please contact:

Mike Powell
powellm@m-bindustries.com
(828) 862-4201



M - B INDUSTRIES, INC.

SERVING INDUSTRY SINCE 1894

9205 ROSMAN HWY., P.O. BOX 1118, ROSMAN, NC 28772

PHONE (828) 862-4201, FAX (828) 862-4297

Sunbelt Spring & Stamping / Mitchell-Bissell Co.

Regular Eyelets

Image at bottom of columns

Part Number	A		B		C		D		E	
	inches	mm	inches	mm	inches	mm	inches	mm	inches	mm
1000-1	.079	2.0	.039	1.0	.079	2.0	.122	3.1	.059	1.5
1000-2	.079	2.0	.039	1.0	.118	3.0	.122	3.1	.079	2.0
1001	.099	2.5	.059	1.5	.142	3.6	.150	3.8	.102	2.6
1002	.099	2.5	.059	1.5	.591	15.0	.185	4.7	.493	12.5
1003	.099	2.5	.059	1.5	.268	6.8	.150	3.8	.217	5.5
1003-1	.100	2.5	.060	1.5	.197	5.0	.150	3.8	.157	4.0
1003-2	.100	2.5	.060	1.5	.157	4.0	.150	3.8	.118	3.0
1004	.110	2.8	.059	1.5	.087	2.2	.189	4.8	.039	1.0
1005	.110	2.8	.059	1.5	.126	3.2	.189	4.8	.079	2.0
1006	.114	2.9	.059	1.5	.158	4.0	.189	4.8	.118	3.0
1007	.110	2.8	.059	1.5	.256	6.5	.189	4.8	.197	5.0
1007-2	.114	2.9	.060	1.5	.295	7.5	.189	4.8	.236	6.0
1008	.110	2.8	.047	1.2	.126	3.2	.189	4.8	.079	2.0
1009	.110	2.8	.047	1.2	.165	4.2	.189	4.8	.118	3.0
1010	.118	3.0	.067	1.7	.118	3.0	.165	4.2	.079	2.0
1010-1	.124	3.14	.063	1.6	.126	3.2	.217	5.5	.095	2.4
1010-2	.118	3.0	.079	2.0	.189	4.8	.165	4.2	.158	4.0
1010-3	.118	3.0	.079	2.0	.150	3.8	.165	4.2	.118	3.0
1010-4	.118	3.0	.079	2.0	.181	4.6	.165	4.2	.142	3.6
1011	.118	3.0	.067	1.7	.165	4.2	.165	4.2	.118	3.0
1011-1	.118	3.0	.067	1.7	.079	2.0	.165	4.2	.039	1.0
1012	.126	3.2	.063	1.6	.205	5.2	.221	5.6	.158	4.0
1013	.126	3.2	.063	1.6	.185	4.7	.221	5.6	.138	3.5
1013-1	.130	3.3	.079	2.0	.157	4.0	.177	4.5	.118	3.0
1014	.126	3.2	.063	1.6	.130	3.3	.221	5.6	.099	2.5
1014-1	.146	3.7	.179	2.0	.260	6.6	.185	4.7	.197	5.0
1014-3	.142	3.6	.071	1.8	.146	3.7	.236	6.0	.099	2.5
1014-5	.146	3.7	.079	2.0	.189	4.8	.185	4.7	.142	3.6
1015	.150	3.8	.059	1.5	.177	4.5	.217	5.5	.118	3.0
1015-1	.150	3.8	.075	1.9	.165	4.2	.217	5.5	.118	3.0

1016	.150	3.8	.079	2.0	.158	4.0	.276	7.0	.099	2.5
1016-1	.150	3.8	.079	2.0	.158	4.0	.276	7.0	.099	2.5
1017	.150	3.8	.079	2.0	.177	4.5	.229	5.8	.099	2.5
1017-1	.154	3.9	.087	2.2	.209	5.3	.217	5.5	.169	4.3
1017-3	.158	4.0	.099	2.5	.197	5.0	.197	5.0	.138	3.5
1017-5	.158	4.0	.099	2.5	.158	4.0	.197	5.0	.118	3.0
1017-6	.157	4.0	.100	2.5	.197	5.0	.197	5.0	.156	4.0
1017-7	.158	4.0	.079	2.0	.177	4.5	.236	6.0	.099	2.5
1018	.169	4.3	.079	2.0	.315	8.0	.232	5.9	.236	6.0
1019	.169	4.3	.079	2.0	.362	9.2	.232	5.9	.311	7.9
1020	.165	4.2	.099	2.5	.169	4.3	.229	5.8	.118	3.0
1021	.165	4.2	.099	2.5	.225	5.7	.229	5.8	.185	4.7
1021-1	.177	4.5	.075	1.9	.150	3.8	.260	6.6	.110	2.8
1021-2	.173	4.4	.079	2.0	.197	5.0	.232	5.9	.138	3.5
1021-4	.177	4.5	.102	2.6	.069	1.75	.216	5.5	.047	1.2
1022	.189	4.8	.130	3.3	.177	4.5	.256	6.5	.118	3.0
1022-A	.189	4.8	.130	3.3	.110	2.8	.256	6.5	.051	1.3
1023	.189	4.8	.130	3.3	.318	8.0	.256	6.5	.254	6.4
1023-1	.201	5.1	.091	2.3	.189	4.8	.280	7.1	.126	3.2
1024	.197	5.0	.079	2.0	.181	4.6	.260	6.6	.118	3.0
1025	.197	5.0	.079	2.0	.276	7.0	.260	6.6	.217	5.5
1026	.197	5.0	.079	2.0	.138	3.5	.260	6.6	.099	2.5
1026-1	.209	5.3	.130	3.3	.205	5.2	.268	6.8	.158	4.0
1026-2	.201	5.1	.100	2.5	.217	5.5	.268	6.8	.156	4.0
1026-3	.197	5.0	.079	2.0	.504	12.8	.260	6.6	.445	11.3
1026-5	.197	5.0	.079	2.0	.315	8.0	.260	6.6	.256	6.5
1027	.209	5.3	.130	3.3	.217	5.5	.268	6.8	.158	4.0
1027-1	.205	5.2	.091	2.3	.189	4.8	.280	7.1	.126	3.2
1028	.201	5.1	.130	3.3	.276	7.0	.268	6.8	.197	5.0
1028-4	.213	5.4	.098	2.5	.220	5.6	.315	8.0	.157	4.0
1029	.221	5.6	.122	3.1	.252	6.4	.311	7.9	.201	5.1
1030	.225	5.7	.162	4.1	.197	5.0	.311	7.9	.126	3.2
1031	.229	5.8	.114	2.9	.236	6.0	.307	7.8	.158	4.0
1032	.229	5.8	.114	2.9	.299	7.6	.307	7.8	.225	5.7
1033	.229	5.8	.114	2.9	.303	7.7	.307	7.8	.236	6.0

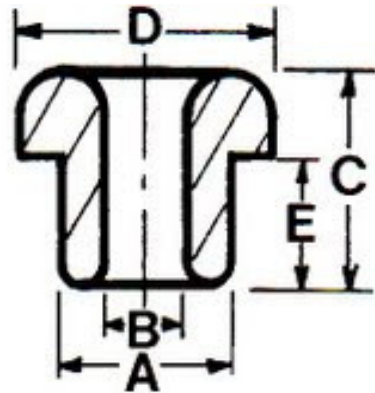
1034	.229	5.8	.114	2.9	.138	3.5	.307	7.8	.079	2.0
1035	.232	5.9	.118	3.0	.189	4.8	.327	8.3	.118	3.0
1036P	.232	5.9	.134	3.4	.236	6.0	.307	7.8	.158	4.0
1037	.232	5.9	.134	3.4	.197	5.0	.307	7.8	.118	3.0
1038	.232	5.9	.134	3.4	.276	7.0	.307	7.8	.197	5.0
1039	.236	6.0	.134	3.4	.256	6.5	.307	7.8	.197	5.0
1040	.232	5.9	.134	3.4	.315	8.0	.307	7.8	.252	6.4
1041	.236	6.0	.126	3.2	.142	3.6	.299	7.6	.079	2.0
1041-1	.236	6.0	.138	3.5	.201	5.1	.296	7.5	.158	4.0
1042	.244	6.2	.118	3.0	.276	7.0	.315	8.0	.197	5.0
1043	.240	6.1	.162	4.1	.315	8.0	.339	8.6	.256	6.5
1044	.240	6.1	.162	4.1	.386	9.8	.402	10.2	.307	7.8
1045	.244	6.2	.138	3.5	.276	7.0	.319	8.1	.197	5.0
1046	.240	6.1	.134	3.4	.197	5.0	.315	8.0	.138	3.5
1047	.236	6.0	.126	3.2	.225	5.7	.299	7.6	.162	4.1
1047A	.236	6.0	.138	3.5	.177	4.5	.296	7.5	.138	3.5
1047-2	.244	6.2	.162	3.5	.315	8.0	.402	10.2	.260	6.6
1047-4	.244	6.2	.138	4.1	.110	2.8	.319	8.1	.071	1.8
1047-6	.244	6.2	.126	3.5	.177	4.5	.307	7.8	.138	3.5
1048	.248	6.3	.114	3.2	.185	4.7	.418	10.6	.118	3.0
1048-1	.250	6.35	.114	2.9	.410	10.4	.418	10.6	.331	8.4
1049	.248	6.3	.138	2.9	.099	2.5	.315	8.0	.059	1.5
1050	.248	6.3	.138	3.5	.138	3.5	.315	8.0	.099	2.5
1051	.248	6.3	.138	3.5	.177	4.5	.315	8.0	.138	3.5
1052	.252	6.4	.158	4.0	.331	8.4	.343	8.7	.264	6.7
1053	.252	6.4	.158	4.0	.256	6.5	.343	8.7	.197	5.0
1054	.252	6.4	.158	4.0	.181	4.6	.343	8.7	.126	3.2
1055	.260	6.6	.150	3.8	.236	6.0	.343	8.7	.158	4.0
1056	.260	6.6	.150	3.8	.197	5.0	.343	8.7	.118	3.0
1057	.260	6.6	.150	3.8	.296	7.5	.343	8.7	.236	6.0
1057-1	.264	6.7	.158	4.0	.315	8.0	.355	9.0	.236	6.0
1058	.266	6.75	.146	3.7	.181	4.6	.362	9.2	.118	3.0
1058-1	.276	7.0	.177	4.5	.181	4.6	.362	9.2	.118	3.0
1058-3	.272	6.9	.087	2.2	.315	8.0	.563	14.3	.197	5.0
1058-5	.272	6.9	.173	4.4	.197	5.0	.473	12.0	.095	2.4

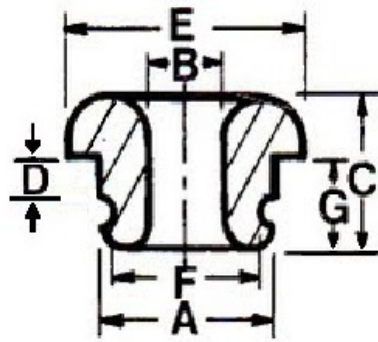
1058-6	.276	7.0	.110	2.8	.197	5.0	.354	9.0	.126	3.2
1059	.272	6.9	.158	4.0	.386	9.8	.398	10.1	.315	8.0
1060	.272	6.9	.177	4.5	.276	7.0	.362	9.2	.209	5.3
1060-2	.272	6.9	.177	4.5	.225	5.7	.362	9.2	.158	4.0
1060-4	.276	7.0	.158	4.0	.351	8.96	.355	9.0	.276	7.0
1060-6	.280	7.1	.189	4.8	.299	7.6	.390	9.9	.236	6.0
1060-8	.280	7.1	.110	2.8	.197	5.0	.362	9.2	.130	3.3
1061	.280	7.1	.189	4.8	.197	5.0	.390	9.9	.118	3.0
1062	.280	7.1	.189	4.8	.264	6.7	.390	9.9	.197	5.0
1062-2	.280	7.1	.189	4.8	.299	7.6	.390	9.9	.236	6.0
1062-4	.284	7.2	.189	4.8	.217	5.5	.390	9.9	.158	4.0
1063	.288	7.3	.134	3.4	.327	8.3	.347	8.8	.276	7.0
1064	.288	7.3	.134	3.4	.264	6.7	.347	8.8	.193	4.9
1065	.288	7.3	.154	3.9	.355	9.0	.374	9.5	.276	7.0
1065-6	.283	7.2	.189	4.8	.118	3.0	.389	9.9	.060	1.5
1066	.288	7.3	.134	3.4	.433	11.0	.347	8.8	.355	9.0
1067	.292	7.4	.154	3.9	.315	8.0	.374	9.5	.236	6.0
1068	.292	7.4	.217	5.5	.394	10.0	.378	9.6	.315	8.0
1068-2	.291	7.4	.216	5.5	.354	9.0	.378	9.6	.276	7.0
1068-4	.295	7.5	.173	4.4	.433	11.0	.382	9.7	.354	9.0
1069	.288	7.3	.154	3.9	.292	7.4	.374	9.5	.217	5.5
1069-1	.296	7.5	.217	5.5	.532	13.5	.374	9.5	.453	11.5
1069-2	.296	7.5	.146	3.7	.284	7.2	.378	9.6	.197	5.0
1069-3	.296	7.5	.217	5.5	.394	10.0	.378	9.6	.315	8.0
1070	.297	7.55	.213	5.4	.374	9.5	.394	10.0	.315	8.0
1071	.299	7.6	.189	4.8	.315	8.0	.422	10.7	.236	6.0
1072	.296	7.5	.173	4.4	.276	7.0	.382	9.7	.197	5.0
1073	.299	7.6	.189	4.8	.343	8.7	.422	10.7	.276	7.0
1074	.299	7.6	.189	4.8	.256	6.5	.422	10.7	.177	4.5
1074-1	.299	7.6	.197	5.0	.114	2.9	.339	8.6	.079	2.0
1075	.299	7.6	.189	4.8	.197	5.0	.418	10.6	.158	4.0
1075-1	.303	7.7	.217	5.5	.394	10.0	.378	9.6	.315	8.0
1075-3	.307	7.8	.236	6.0	.158	4.0	.378	9.6	.118	3.0
1076	.311	7.9	.158	4.0	.276	7.0	.394	10.0	.197	5.0
1077	.315	8.0	.162	4.1	.327	8.3	.394	10.0	.252	6.4

1077-1	.315	8.0	.162	4.1	.248	6.3	.394	10.0	.173	4.4
1077-3	.323	8.2	.197	5.0	.315	8.0	.429	10.9	.236	6.0
1077-5	.323	8.2	.197	5.0	.394	10.0	.429	10.9	.315	8.0
1078	.331	8.4	.189	4.8	.236	6.0	.422	10.7	.158	4.0
1079	.335	8.5	.162	4.1	.276	7.0	.394	10.0	.217	5.5
1080	.339	8.6	.189	4.8	.552	14.0	.422	10.7	.473	12.0
1081	.339	8.6	.189	4.8	.382	9.7	.422	10.7	.307	7.8
1081-2	.339	8.6	.189	4.8	.315	8.0	.422	10.7	.236	6.0
1082	.339	8.6	.189	4.8	.197	5.0	.422	10.7	.138	3.5
1083	.347	8.8	.189	4.8	.394	10.0	.418	10.6	.327	8.3
1084	.347	8.8	.209	5.3	.670	17.0	.508	12.9	.552	14.0
1085	.347	8.8	.209	5.3	.520	13.2	.508	12.9	.445	11.3
1086	.351	8.9	.158	4.0	.315	8.0	.709	18.0	.138	3.5
1087	.347	8.8	.189	4.8	.512	13.0	.418	10.6	.445	11.3
1087-2	.355	9.0	.244	6.2	.296	7.5	.500	12.7	.197	5.0
1088	.359	9.1	.209	5.3	.343	8.7	.457	11.6	.272	6.9
1089	.355	9.0	.197	5.0	.749	19.0	.433	11.0	.670	17.0
1089-1	.355	9.0	.158	4.0	.276	7.0	.512	13.0	.197	5.0
1090	.370	9.4	.244	6.2	.414	10.5	.473	12.0	.331	8.4
1090-2	.370	9.4	.244	6.2	.252	6.4	.472	12.0	.156	4.0
1090-4	.374	9.5	.260	6.6	.307	7.8	.520	13.2	.071	1.8
1090-6	.374	9.5	.217	5.5	.323	8.2	.461	11.7	.236	6.0
1090-7	.374	9.5	.260	6.6	.413	10.5	.512	13.0	.354	9.0
1091	.378	9.6	.244	6.2	.173	4.4	.473	12.0	.079	2.0
1092	.378	9.6	.244	6.2	.181	4.6	.473	12.0	.099	2.5
1092-2	.374	9.5	.217	5.5	.323	8.2	.461	11.7	.236	6.0
1093	.375	9.52	.185	4.7	.374	9.5	.500	12.7	.248	6.3
1094	.374	9.5	.260	6.6	.414	10.5	.512	13.0	.355	9.0
1095	.378	9.6	.244	6.2	.355	9.0	.473	12.0	.276	7.0
1095-1	.370	9.4	.244	6.2	.311	7.9	.473	12.0	.217	5.5
1096	.378	9.6	.244	6.2	.414	10.5	.473	12.0	.331	8.4
1096-6	.386	9.8	.185	4.7	.280	7.1	.504	12.8	.181	4.6
1097	.386	9.8	.209	5.3	.985	25.0	.579	14.7	.867	22.0
1097-1	.390	9.9	.248	6.3	.615	15.6	.532	13.5	.433	11.0
1098	.390	9.9	.240	6.1	.173	4.4	.469	11.9	.114	2.9

1098-2	.390	9.9	.276	7.0	.315	8.0	.477	12.1	.236	6.0
1098-4	.390	9.9	.276	7.0	.236	6.0	.477	12.1	.158	4.0
1098-6	.390	9.9	.276	7.0	.433	11.0	.477	12.1	.347	8.8
1098-8	.389	9.9	.276	7.0	.492	12.5	.476	12.1	.354	9.0
1098-9	.389	10.0	.256	6.5	.374	9.5	.551	14.0	.256	6.5
1099	.394	10.0	.236	6.0	.591	15.0	.473	12.0	.433	11.0
1099-1	.394	10.0	.276	7.0	.197	5.0	.477	12.1	.118	3.0
1099-2	.394	10.0	.193	4.9	.335	8.5	.473	12.0	.256	6.5
1099-3	.429	10.9	.256	6.5	.473	12.0	.552	14.0	.378	9.6
1100	.433	11.0	.303	7.7	.433	11.0	.552	14.0	.335	8.5
1100-2	.433	11.0	.256	6.5	.362	9.2	.552	14.0	.266	6.75
1101	.445	11.3	.276	7.0	.355	9.0	.552	14.0	.276	7.0
1101-2	.445	11.3	.276	7.0	.276	7.0	.552	14.0	.197	5.0
1102	.465	11.8	.299	7.6	.402	10.2	.607	15.4	.284	7.2
1102-1	.433	11.0	.303	7.7	.256	6.5	.552	14.0	.197	5.0
1103	.481	12.2	.299	7.6	.351	8.9	.607	15.4	.256	6.5
1103-1	.469	11.9	.299	7.6	.276	7.0	.607	15.4	.158	4.0
1103-6	.484	12.3	.268	6.8	.350	8.9	.618	15.7	.256	6.5
1104	.485	12.3	.343	8.7	.402	10.2	.626	15.9	.284	7.02
1105	.489	12.4	.197	5.0	.583	14.8	.595	15.1	.3386	9.8
1106	.493	12.5	.343	8.7	.402	10.2	.623	15.8	.284	7.2
1106-0	.496	12.6	.181	4.6	.276	7.0	.619	15.7	.158	4.0
1106-A	.504	12.8	.343	8.7	.433	11.0	.709	18.0	.315	8.0
1106-B	.504	12.8	.343	8.7	.552	14.0	.709	18.0	.433	11.0
1106-1	.548	13.9	.394	10.0	.236	6.0	.630	16.0	.158	4.0
1106-2	.583	14.8	.134	3.4	.382	9.7	.776	19.7	.256	6.5
1107	.591	15.0	.382	9.7	.355	9.0	.753	19.1	.236	6.0
1108	.603	15.3	.382	9.7	.536	13.6	.768	19.5	.394	10.0
1109	.603	15.3	.382	9.7	.670	17.0	.768	19.5	.550	14.0
1109-2	.603	15.3	.382	9.7	.355	9.0	.768	19.5	.236	6.0
1109-4	.709	18.0	.158	4.0	.630	16.0	.946	24.0	.532	13.5
1110	.717	18.2	.477	12.1	.532	13.5	.879	22.3	.394	10.0
1110-2	.772	19.6	.552	14.0	.493	12.5	1.01	25.7	.366	9.3
1111	.867	22.0	.630	16.0	.433	11.0	1.12	28.3	.276	7.0
1112	.866	22.0	.520	13.2	.551	14.0	1.114	28.3	.354	9.0

1113	.946	24.0	.749	19.0	.433	11.0	1.18	30.0	.276	7.0
1115	1.01	25.6	.780	19.8	.315	8.0	1.24	31.5	.236	6.0
1115-2	1.01	25.6	.831	21.1	.177	4.5	1.11	28.2	.130	3.3
1116	1.01	25.8	.780	19.8	.106	2.7	1.25	31.8	.020	.5
1118	1.17	29.8	.796	20.2	.985	25.0	1.38	35.0	.788	20.0
1120	1.38	35.0	.946	24.0	.433	11.0	1.50	38.0	.315	8.0

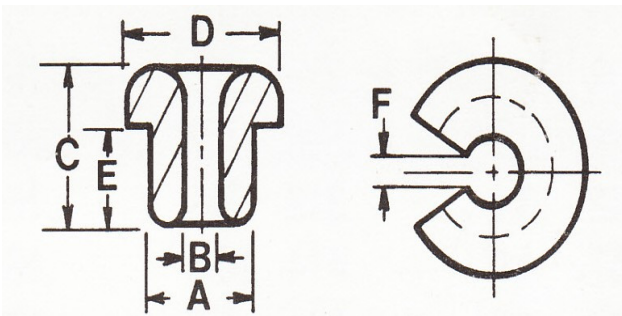




Grooved Eyelets

Part #	A		B		C		D		E		F		G	
	inches	mm	inches	mm	inches	mm	inches	mm	inches	mm	inches	mm	inches	mm
2000G	.169	4.3	.059	1.5	.189	4.8	.055	1.4	.229	5.8	.142	3.6	.138	3.5
2000	.173	4.4	.059	1.5	.189	4.8	.063	1.6	.229	5.8	.142	3.6	.138	3.5
2001	.177	4.5	.079	2.0	.189	4.8	.075	1.9	.225	5.7	.150	3.8	.146	3.7
2001-1POR	.185	4.7	.062	1.5	.197	5.0	.075	1.9	.225	5.7	.150	3.8	.157	4.0
2002	.229	5.8	.114	2.9	.256	6.5	.079	2.0	.303	7.7	.193	4.9	.189	4.8
2002-1	.229	5.8	.118	3.0	.276	7.0	.039	1.0	.327	8.3	.177	4.5	.197	5.0
2002-3	.229	5.8	.114	2.9	.252	6.4	.079	2.0	.303	7.7	.193	4.9	.185	4.7
2002-4	.232	5.9	.118	3.0	.256	6.5	.087	2.2	.327	8.3	.201	5.1	.193	4.9
2003	.236	6.0	.126	3.2	.201	5.1	.055	1.4	.299	7.6	.205	5.2	.150	3.8
2004	.244	6.2	.118	3.0	.229	5.8	.063	1.6	.315	8.0	.205	5.2	.158	4.0
2004-POR	.240	6.1	.110	2.8	.270	6.8	.068	1.7	.312	8.0	.200	5.1	.202	5.1
2004-1	.248	6.3	.110	2.8	.229	5.8	.063	1.6	.311	7.9	.205	5.2	.158	4.0
2004-2	.248	6.3	.118	3.0	.229	5.8	.059	1.5	.315	8.0	.205	5.2	.158	4.0
2005	.240	6.1	.118	3.0	.414	10.5	.158	4.0	.315	8.0	.213	5.4	.276	7.0
2006	.260	6.6	.150	3.8	.382	9.7	.197	5.0	.343	8.7	.221	5.6	.307	7.8
2007	.260	6.6	.158	4.0	.315	8.0	.079	2.0	.355	9.0	.221	5.6	.197	5.0
2008	.256	6.5	.150	3.8	.229	5.8	.189	1.4	.343	8.7	.217	5.5	.162	4.1
2009	.260	6.6	.150	3.8	.221	5.6	.067	1.7	.343	8.7	.225	5.7	.158	4.0
2009-1	.260	6.6	.150	3.8	.236	6.0	.059	1.5	.343	8.7	.225	5.7	.165	4.2
2010	.283	7.2	.158	4.0	.315	8.0	.126	3.2	.406	10.3	.236	6.0	.248	6.3
2011	.288	7.3	.134	3.4	.303	7.7	.122	3.1	.347	8.8	.229	5.8	.225	5.7
2012	.288	7.3	.134	3.4	.299	7.6	.106	2.7	.347	8.8	.225	5.7	.225	5.7
2013	.288	7.3	.134	3.4	.457	11.6	.254	6.45	.347	8.8	.232	5.9	.382	9.7
2013-POR	.295	7.5	.157	4.0	.472	12.0	.268	6.8	.374	9.5	.252	6.4	.374	9.5
2013-1	.288	7.3	.134	3.4	.418	10.6	.236	6.0	.347	8.8	.232	5.9	.339	8.6
2014	.296	7.5	.173	4.4	.296	7.5	.118	3.0	.382	9.7	.268	6.8	.229	5.8
2015	.296	7.5	.146	3.7	.378	9.6	.201	5.1	.378	9.6	.260	6.6	.292	7.4
2016	.299	7.6	.083	2.1	.426	10.8	.185	4.7	.493	12.5	.193	4.9	.331	8.4
2016-2	.307	7.8	.138	3.5	.374	9.5	.189	4.8	.370	9.4	.240	6.1	.296	7.5
2016-4	.307	7.8	.125	3.2	.579	14.7	.339	8.6	.429	10.9	.260	6.6	.457	11.6
2017	.307	7.8	.142	3.6	.319	8.1	.150	3.8	.370	9.4	.268	6.8	.252	6.4
2018	.311	7.9	.157	4.0	.414	10.5	.189	4.8	.394	10.0	.276	7.0	.327	8.3
2019	.311	7.9	.157	4.0	.264	6.7	.079	2.0	.394	10.0	.280	7.1	.193	4.9
2019-1	.296	7.5	.189	4.8	.406	10.3	.250	6.35	.422	10.7	.252	6.4	.335	8.5
2020	.315	8.0	.177	4.5	.185	4.7	.047	1.2	.398	10.1	.276	7.0	.130	3.3
2020-2	.315	8.0	.063	1.6	.236	6.0	.079	2.0	.473	12.0	.296	7.5	.138	3.5

2020-4	.315	8.0	.157	4.0	.315	8.0	.157	4.0	.374	9.5	.280	7.1	.256	6.5
2021	.311	7.9	.150	3.8	.335	8.5	.146	3.7	.378	9.6	.280	7.1	.264	6.7
2021-POR	.299	7.6	.157	4.0	.339	8.6	.157	4.0	.362	9.2	.272	6.9	.260	6.6
2021-X	.311	7.9	.150	3.8	.335	8.5	.118	3.0	.378	9.6	.280	7.1	.264	6.7
2021-1	.311	7.9	.083	2.1	.335	8.5	.150	3.8	.378	9.6	.276	7.0	.268	6.8
2021-2	.311	7.9	.122	3.1	.335	8.5	.150	3.8	.378	9.6	.276	7.0	.264	36.7
2022	.311	7.9	.047	1.2	.335	8.5	.146	3.7	.378	9.6	.276	7.0	.268	6.8
2023	.311	7.9	.063	1.6	.335	8.5	.146	3.7	.378	9.6	.276	7.0	.256	6.5
2023-4	.323	8.2	.197	5.0	.390	10.0	.138	3.5	.429	10.9	.264	6.7	.315	8.0
2024	.335	8.5	.162	4.1	.276	7.0	.095	2.4	.394	10.0	.272	6.9	.209	5.3
2025	.335	8.5	.162	4.1	.288	7.3	.142	3.6	.394	10.0	.292	7.4	.217	5.5
2026	.339	8.6	.189	4.8	.236	6.0	.079	2.0	.422	10.7	.296	7.5	.158	4.0
2027	.355	9.0	.154	3.9	.252	6.4	.039	1.0	.512	13.0	.307	7.8	.173	4.4
2028	.370	9.4	.244	6.2	.359	9.1	.134	3.4	.469	11.9	.315	8.0	.272	6.9
2028-1	.368	9.35	.205	5.2	.236	6.0	.059	1.5	.453	11.5	.323	8.2	.173	4.4
2028-A	.378	9.6	.244	6.2	.406	10.3	.118	3.0	.469	11.9	.315	8.0	.303	7.7
2028-A1	.374	9.5	.240	6.1	.476	12.1	.110	2.8	.500	12.7	.319	8.1	.378	9.6
2028-2	.386	9.8	.256	6.5	.315	8.0	.126	3.2	.508	12.9	.335	8.5	.236	6.0
2028-3	.386	9.8	.185	4.7	.280	7.1	.087	2.2	.508	12.9	.339	8.6	.189	4.8
2029	.374	9.5	.244	6.2	.362	9.2	.138	3.5	.469	11.9	.315	8.0	.276	7.0
2029A	.374	9.5	.185	4.7	.472	12.0	.181	4.6	.500	12.7	.260	6.6	.398	10.1
2029B	.374	9.5	.244	6.2	.422	10.7	.193	4.9	.469	11.9	.315	8.0	.335	8.5
2029-1	.390	9.9	.244	6.2	.626	15.9	.315	8.0	.532	13.5	.359	9.1	.437	11.1
2029-1A	.389	9.9	.224	5.7	.126	3.2	.047	1.2	.452	11.5	.386	9.8	.079	2.0
2029-2	.465	11.8	.252	6.4	.559	14.2	.252	6.4	.634	16.1	.394	10.0	.437	11.1
2029-POR	.472	12.0	.283	7.2	.598	15.2	.260	6.6	.630	16.0	.413	10.5	.457	11.6
2029-3	.465	11.8	.303	7.7	.402	10.2	.118	3.0	.307	15.4	.418	10.6	.284	7.2
2029-6	.472	12.0	.303	7.7	.453	11.5	.197	5.0	.606	15.4	.409	10.4	.339	8.6
2030	.493	12.5	.185	4.7	.426	10.8	.122	3.1	.619	15.7	.406	10.3	.303	7.7
2030-2	.504	12.8	.343	8.7	.406	10.3	.165	4.2	.626	15.9	.441	11.2	.315	8.0
2031	.528	13.4	.146	3.7	.603	15.3	.276	7.0	1.51	38.4	.473	12.0	.394	10.0
2032	.536	13.6	.292	7.4	.690	17.5	.276	7.0	1.51	38.3	.394	10.00	.414	10.5
2032-1	.544	13.8	.158	4.0	.453	11.5	.264	6.7	.717	18.2	.481	12.2	.390	9.9
2032-8POR	.571	14.5	.338	8.6	.618	15.7	.094	2.4	.866	22.0	.504	12.8	.390	10.0
2033	.583	14.8	.386	9.8	.374	9.5	.110	2.8	.812	20.6	.528	13.4	.248	6.3
2033-2POR	.606	15.4	.362	9.2	.551	14.0	.189	4.8	.768	19.5	.520	13.2	.390	10.0
2033-6POR	.700	17.8	.461	11.7	.654	16.6	.335	8.5	.906	23.0	.622	15.8	.496	12.6
2033-10	.717	18.2	.465	11.8	.638	16.2	.378	9.6	.850	21.6	.650	16.5	.504	12.8
2034	.867	22.0	.630	16.0	.414	10.5	.138	3.5	1.10	28.0	.827	21.0	.296	7.5
2036	.980	24.9	.650	16.5	.791	20.1	.252	6.4	1.250	31.8	.866	22.0	.516	13.1
2036-POR	.980	24.9	.650	16.5	.791	20.1	.252	6.4	1.250	31.8	.866	22.0	.516	13.1
4008GR	1.190	30.2	.870	22.1	.625	15.8	.130	3.3	1.370	35.3	1.00	25.4	.425	10.8
0063GR	1.567	39.8	1.024	26.0	.590	15.0	.060	1.5	2.010	51.0	1.327	33.7	.406	10.3



Slotted Eyelets

Part Number	A		B		C		D		E		F	
	inches	mm	inches	mm	inches	mm	inches	mm	inches	mm	inches	mm
3000	.138	3.5	.079	2.0	1.65	4.2	.209	5.3	.118	3.0	.032	.8
3000-1	.138	3.5	.039	1.0	.165	4.2	.209	5.3	.118	3.0	.032	.8
3001	.150	3.8	.063	1.6	.165	4.2	.205	5.2	.122	3.1	.032	.8
3001-1	.256	6.5	.118	3.0	.303	7.7	.307	7.8	.252	6.4	.102	2.6
3001-2	.232	5.9	.158	4.0	.240	6.1	.355	9.0	.177	4.5	.032	.8
3001-3	.232	5.9	.118	3.0	.240	6.1	.355	9.0	.173	4.4	.032	.8
3001-4	.232	5.9	.118	3.0	.079	2.0	.394	10.0	.039	1.0	.047	1.2
3002	.268	6.8	.158	4.0	.256	6.5	.362	9.2	.197	5.0	.067	1.7
3002-1	.236	6.0	.118	3.0	.169	4.3	.315	8.0	.118	3.0	.059	1.5
3002-2	.268	6.8	.158	4.0	.339	8.6	.362	9.0	.276	7.0	.067	1.7
3003	.268	6.8	.158	4.0	.118	3.0	.362	9.2	.043	10.1	.067	1.7
3004	.276	7.0	.059	1.5	.197	5.0	.359	9.1	.126	3.2	.010	.5
3004-1	.288	7.3	.150	3.8	.315	8.0	.378	9.6	.252	6.4	.039	1.0
3005	.288	7.3	.126	3.2	.177	4.5	.390	9.9	.102	2.6	.059	1.5
3006	.299	7.6	.122	3.1	.366	9.8	.402	10.2	.284	7.2	.035	.9
3006-0	.299	7.6	.197	5.0	.426	10.8	.355	9.0	.378	9.6	.189	4.8
3006-1	.307	7.8	.126	3.2	.221	5.6	.406	10.3	.142	3.6	.039	1.0
3006-3	.311	7.9	.126	3.2	.221	5.6	.406	10.3	.142	3.6	.039	1.0
3006-4	.311	7.9	.028	.7	.158	4.0	.485	12.3	.099	2.5	.028	.7
3007	.319	8.1	.126	3.2	.217	5.5	.414	10.5	.138	3.5	.039	1.0
3008	.319	8.1	.126	3.2	.256	6.5	.414	10.5	.177	4.5	.039	1.0
3009	.355	9.0	.197	5.0	.185	4.7	.433	11.0	.114	2.9	.079	2.0
3010	.374	9.5	.185	4.7	.386	9.8	.496	12.6	.280	7.1	.130	3.3
3010-1	.382	9.7	.213	5.4	.229	5.8	.563	14.3	.138	3.5	.055	1.4
3011	.394	10.0	.158	4.0	.319	8.1	.473	12.0	.276	7.0	.059	1.5
3011-1	.394	10.0	.158	4.0	.414	10.5	.473	12.0	.374	9.5	.059	1.5
3012	.394	10.0	.236	6.0	.177	4.5	.469	11.9	.110	2.8	.099	2.5
3012-1	.406	10.3	.221	5.6	.339	8.6	.552	14.0	.276	7.0	.158	4.0
3013	.516	13.1	.181	4.6	.477	12.1	.678	17.2	.370	9.4	.059	1.5
3013-1	.524	13.3	.181	4.6	.477	12.1	.678	17.2	.370	9.4	.059	1.5
3013-2	.552	14.0	.433	11.0	.236	6.0	.670	17.0	.118	3.0	.355	9.0
3014	.603	15.3	.382	9.7	.528	13.4	.768	19.5	.386	9.8	.102	2.6
3017	.741	18.8	.366	9.3	1.09	27.7	1.11	28.2	.812	20.6	.197	5.0